
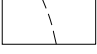



# KEY

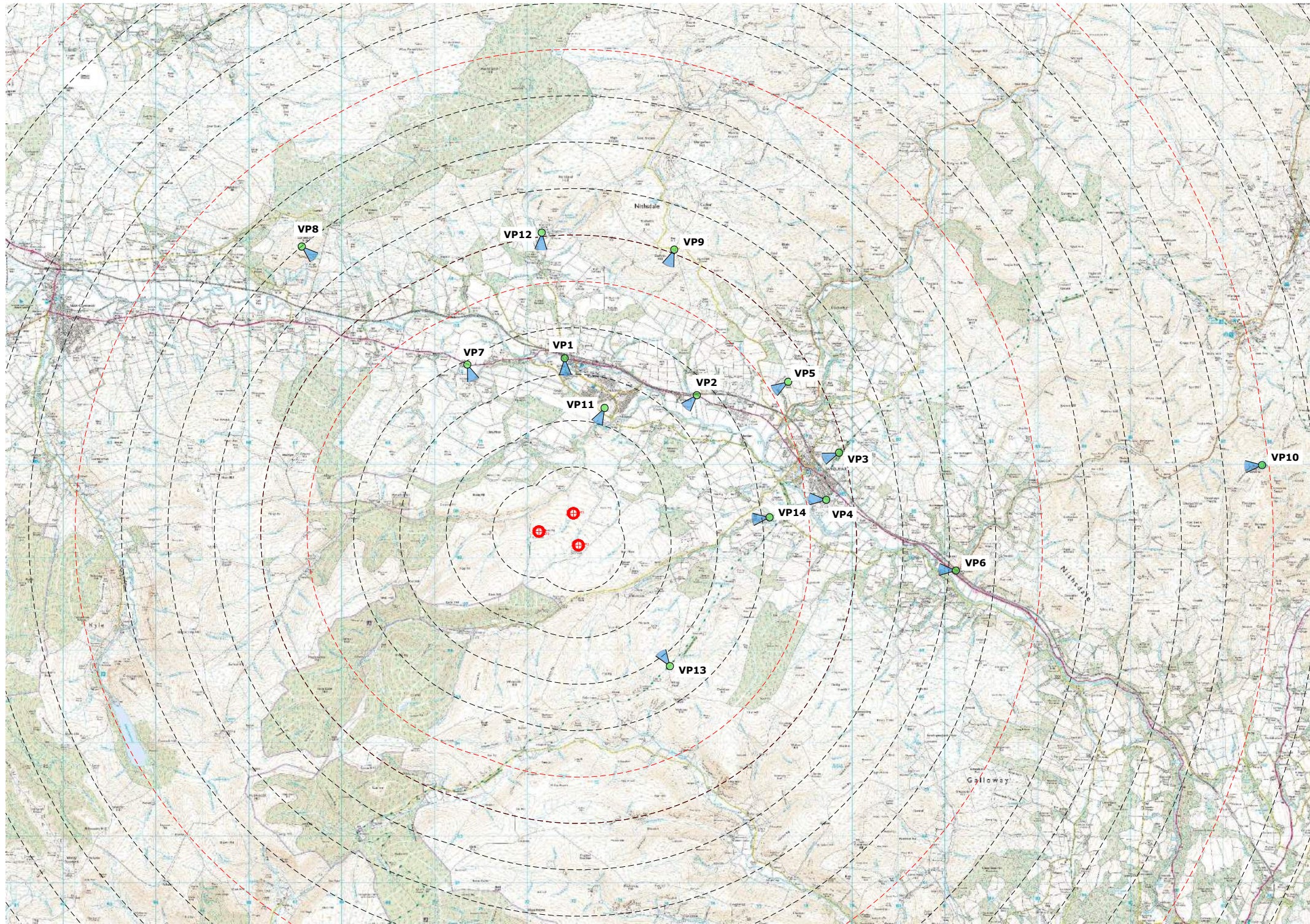
## Proposed Wind Turbine

-  93m hub height / 149.9m to tip height  
Grid References:  
T1 - 273008, 608956  
T2 - 273118, 608267  
T3 - 272266, 608563

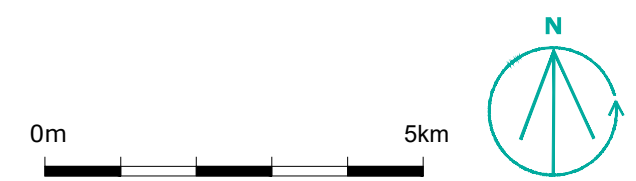
-  1km Radii from Proposed Wind Turbines
-  5km Radii from Proposed Wind Turbines

## Photomontage Viewpoints

-  1 VP1 - St. Connel's Church, Kirkconnel
-  2 VP2 - A76 northwest of Sanquhar
-  3 VP3 - SUW east of Sanquhar
-  4 VP4 - Sanquhar Castle
-  5 VP5 - Crawick Multiverse
-  6 VP6 - Mennock
-  7 VP7 - A76, West of Kirkconnel
-  8 VP8 - Corsencon Hill
-  9 VP9 - Cattle Grid East of Guffock Hill
-  10 VP10 - East Mount Lowther
-  11 VP11 - Kelloholm, to the South of the Village
-  12 VP12 - St Connel's Chapel, near Kirkland
-  13 VP13 - SUW, Whing Head approach from Upper Nithsdale
-  14 VP14 - Kemps Castle





© Crown copyright and database rights 2023 Ordnance Survey 0100031673

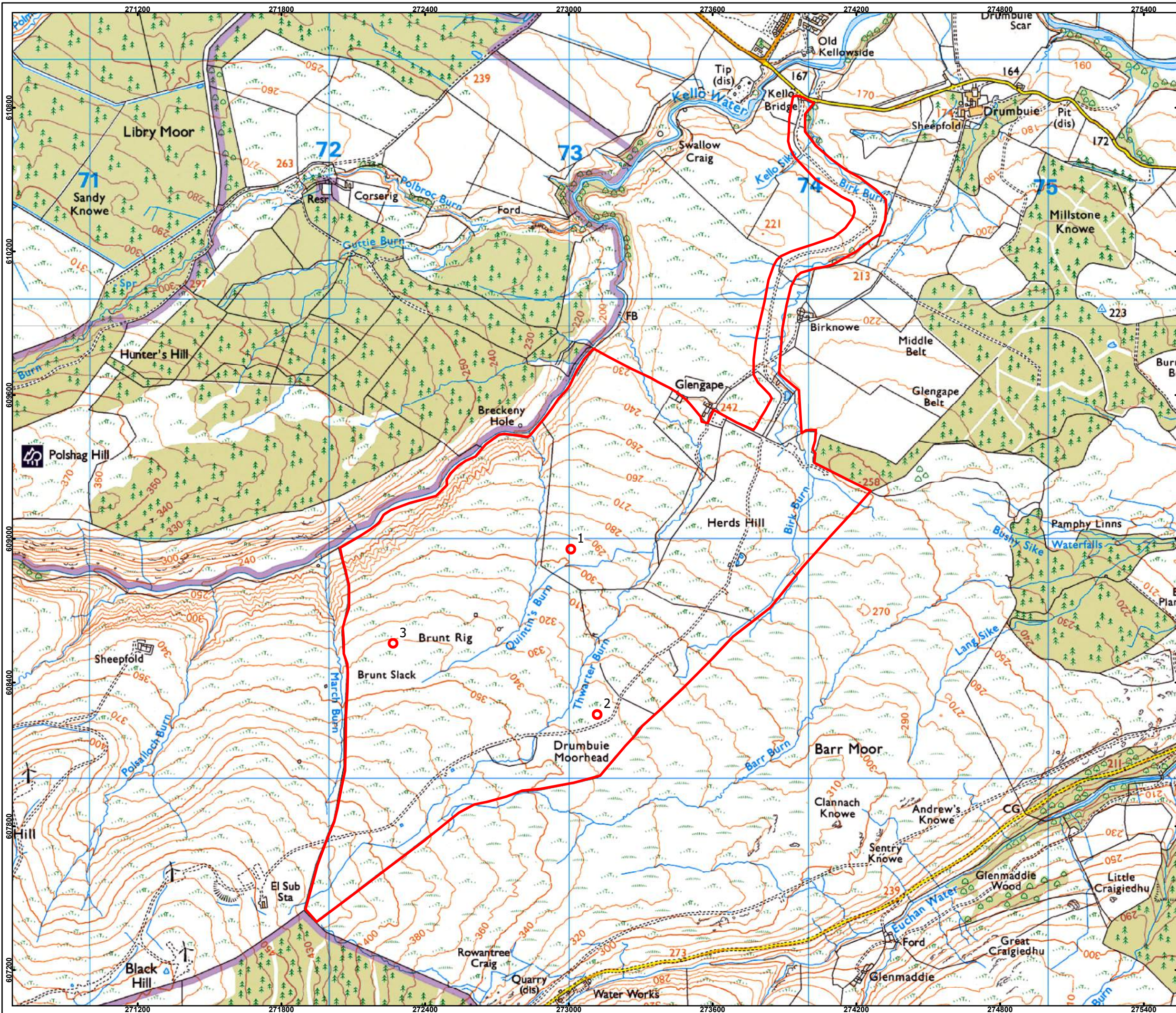




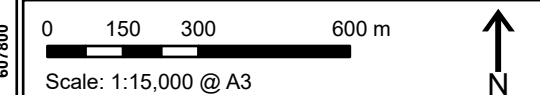
# 397 Herds Hill

## Legend

-  Site Boundary
-  Wind Turbine (149m to Tip)



Notes: N/A  
Revisions: N/A  
Layout: 397-220905-9005-C



## Plan 2- Turbine Layout

Date: 25/10/2023 Ref: 397-220804-7009-D  
Produced: GW Reviewed: DW Approved: GC



Drumbuie Renewables Ltd  
Drumbuie  
Sanquhar  
DG4 6JX  
United Kingdom  
e: info@drumbuie.com

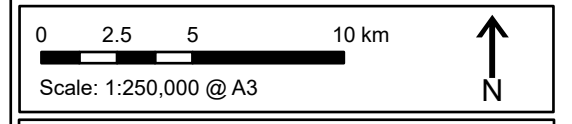
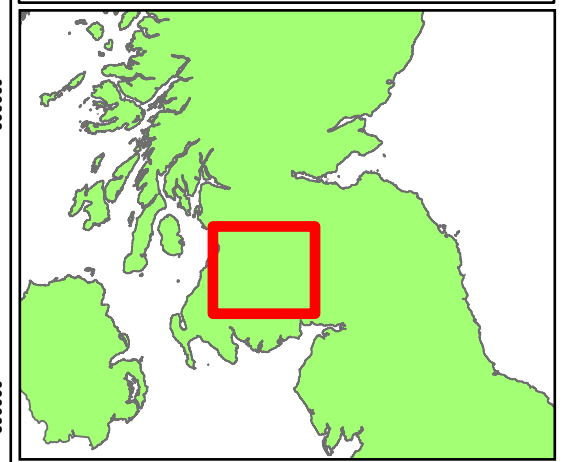


# 397 Herds Hill

## Legend

- Regional Location

Notes: N/A  
Revisions: N/A



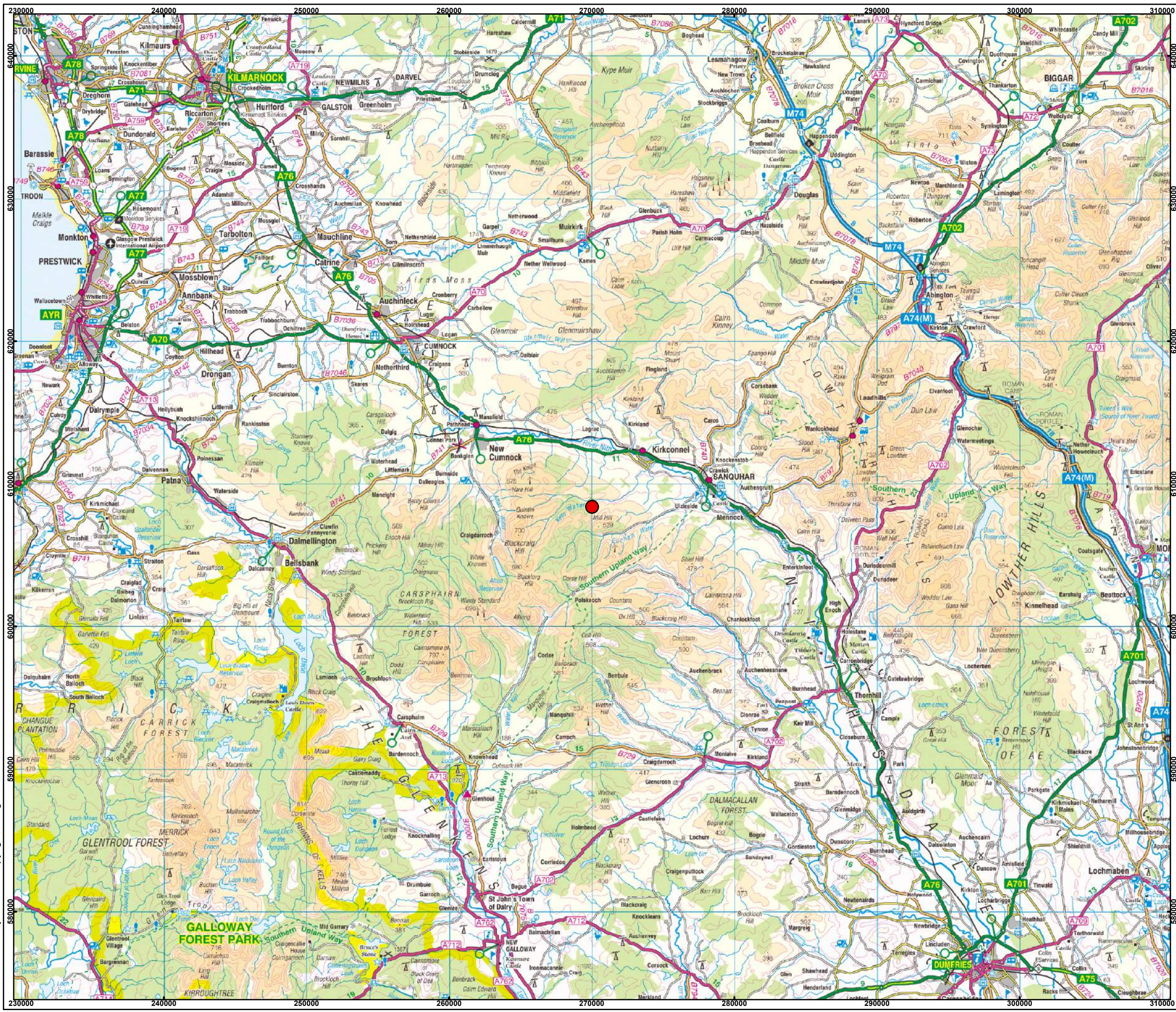
## Plan 3- Regional Location

Date: 28/11/2022 Ref: 397-221128-7029  
Produced: GW Reviewed: DW Approved: GC



Drumbuie Renewables Ltd  
Drumbuie  
Sanquhar  
DG4 6JX  
United Kingdom  
e: info@drumbuie.com

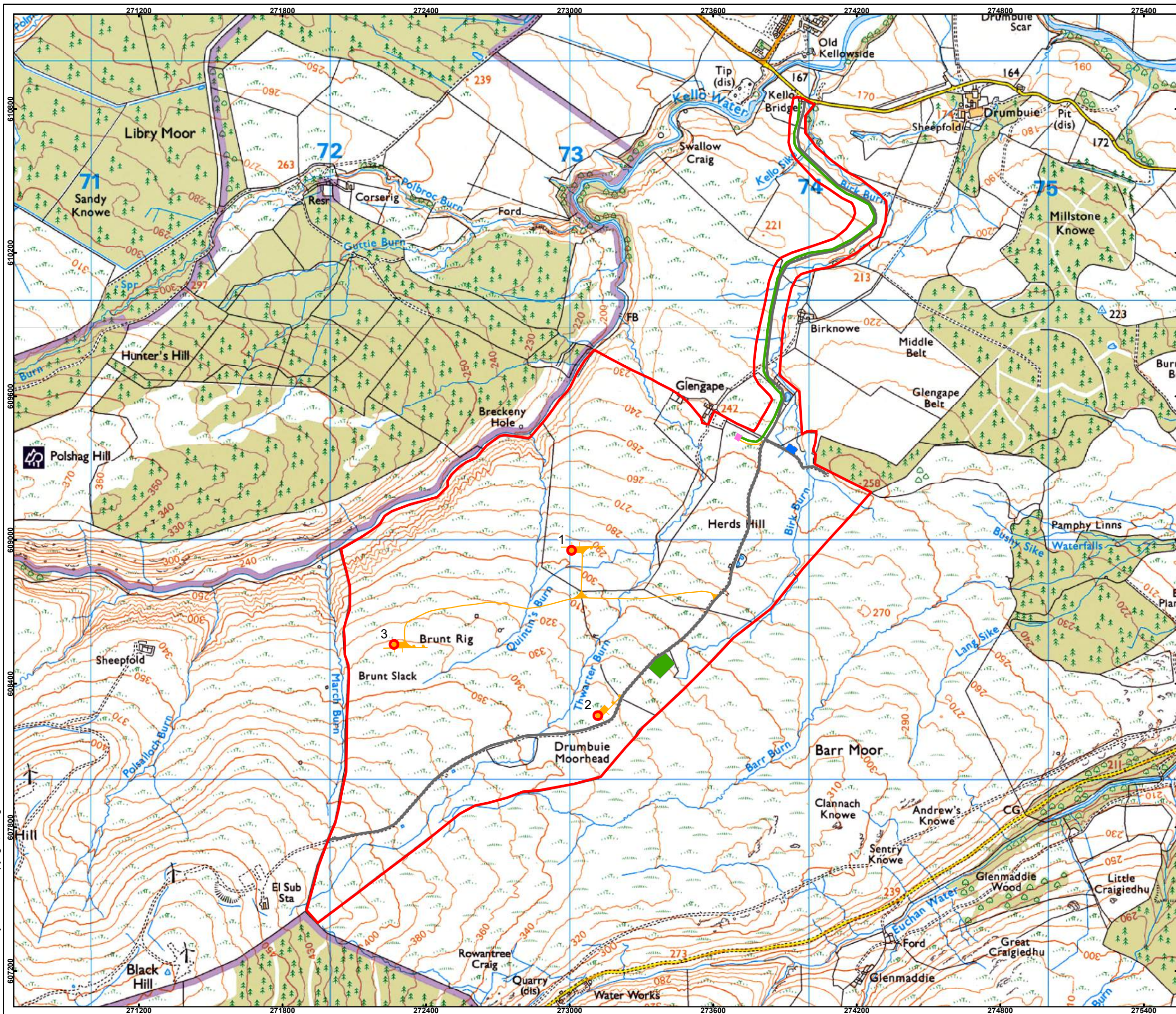
Ordnance Survey © Crown copyright. All rights reserved. 2023. Licence number 0100050146



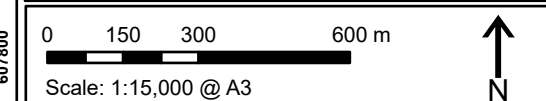


Legend

- Site Boundary
- Wind Turbine (149m to Tip)
- Existing Access Tracks
- Cable Route
- New Access Tracks
- Substation & Control Room
- Temporary Construction Compound
- Existing Borrow Pit



Notes: N/A  
 Revisions: N/A  
 Layout: 397-220905-9005-C



Plan 4- Site Layout and Cable Route

Date: 31/10/2023      Ref: 397-220928-7025-J  
 Produced: GW      Reviewed: DW      Approved: GC

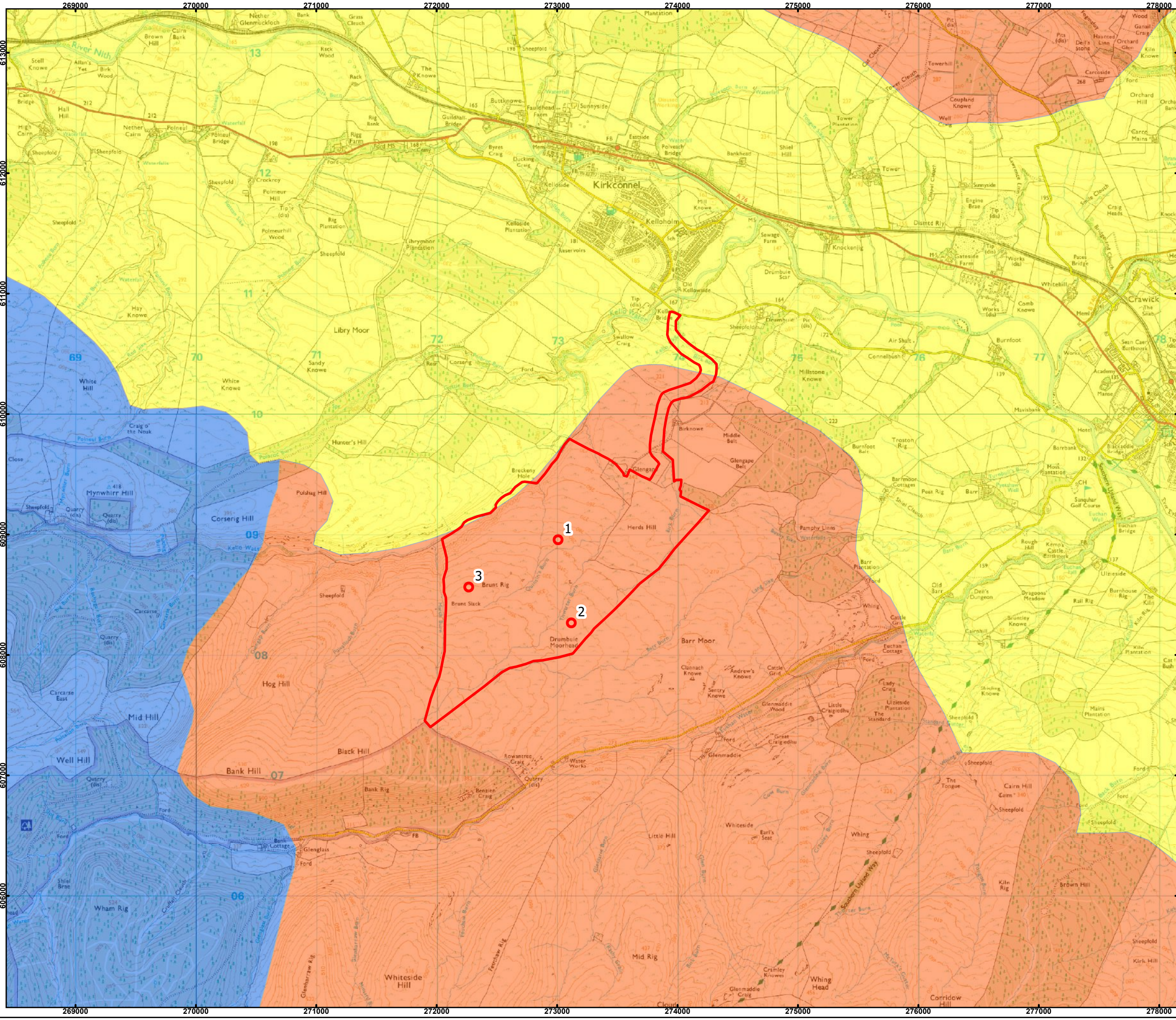
Drumbuie Renewables Ltd  
 Drumbuie  
 Sanquhar  
 DG4 6JX  
 United Kingdom  
 e: info@drumbuie.com



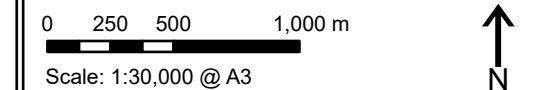
# 397 Herds Hill

## Legend

- Site Boundary
- Wind Turbine (149m to Tip)
- Landscape Character Type**
- 19 (v) Southern Uplands
- 19a (ii) Southern Uplands with Forest
- 9 Upper Dale (Valley)



Notes: N/A  
 Revisions: N/A  
 Layout: 397-220905-9005-C



## Plan 5- Landscape Character Type

Date: 01/11/2022      Ref: 397-221101-7026  
 Produced: GW      Reviewed: DW      Approved: GC

drumbuie

Drumbuie Renewables Ltd  
 Drumbuie  
 Sanquhar  
 DG4 6JX  
 United Kingdom  
 e: info@drumbuie.com

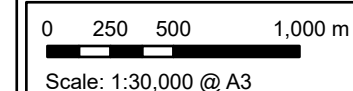


# 397 Herds Hill

## Legend

- Site Boundary
- Wind Turbine (149m to Tip)
- ⊕ Sanquhar Turbines (130m to Tip)
- ⊕ Rowancraig Turbines (180m to Tip)
- ⊕ Cloud Hill Turbines (180m to Tip)
- ⊕ Sanquhar II Turbines (up to 200m to Tip)
- ⊕ Whiteside Hill Turbines (up to 121.2m to Tip)
- ⊕ Sandy Knowe Turbines (up to 125m to Tip)
- ⊕ Sandy Knowe Extension Turbines (up to 149m to Tip)
- ⊕ Eucharhead Turbines (230m to tip)

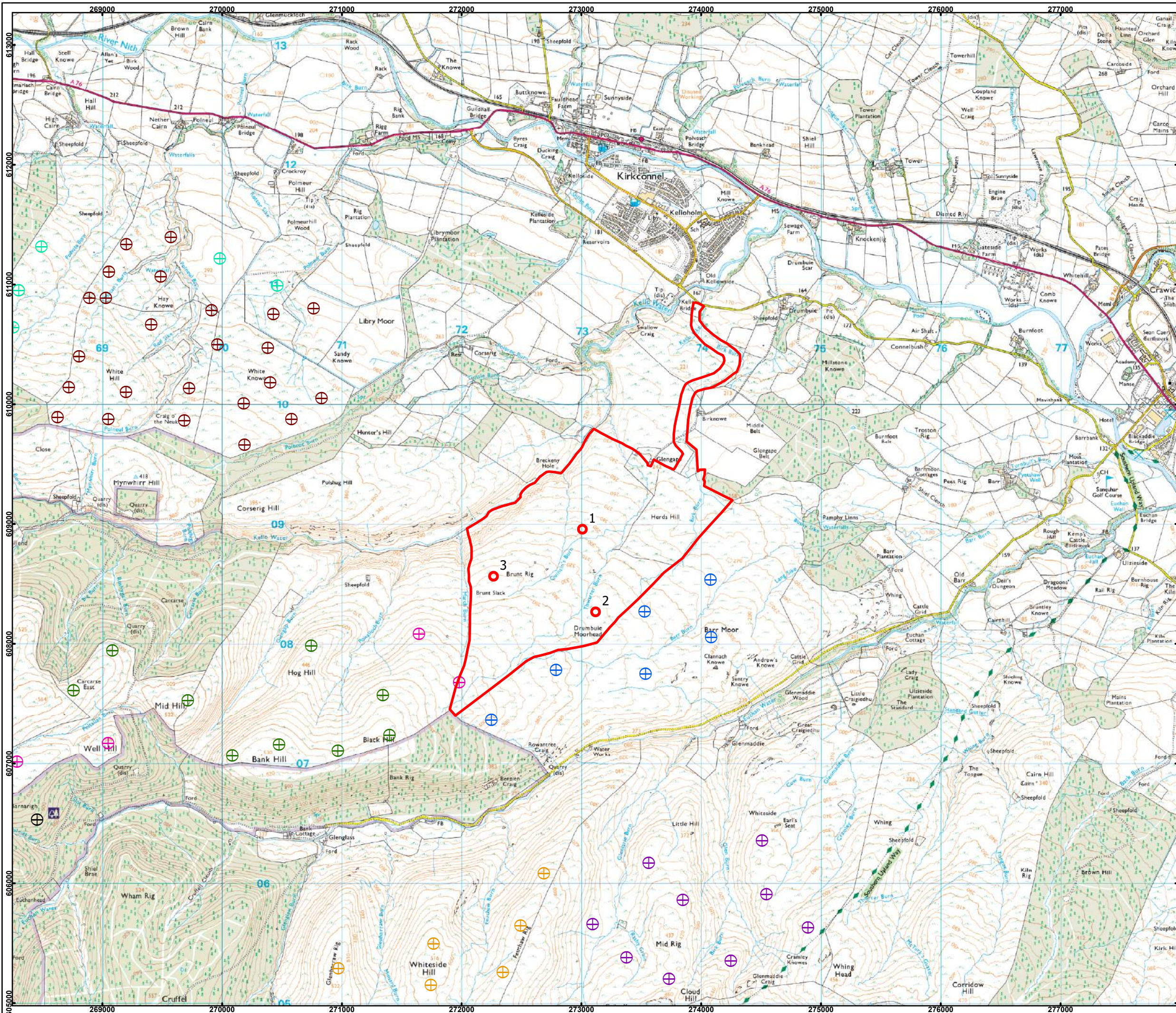
Notes: N/A  
 Revisions: N/A  
 Layout: 397-220905-9005-C



## Plan 6- Cumulative Turbines

Date: 28/11/2022 Ref: 397-220809-7013  
 Produced: GW Reviewed: RE Approved: GC

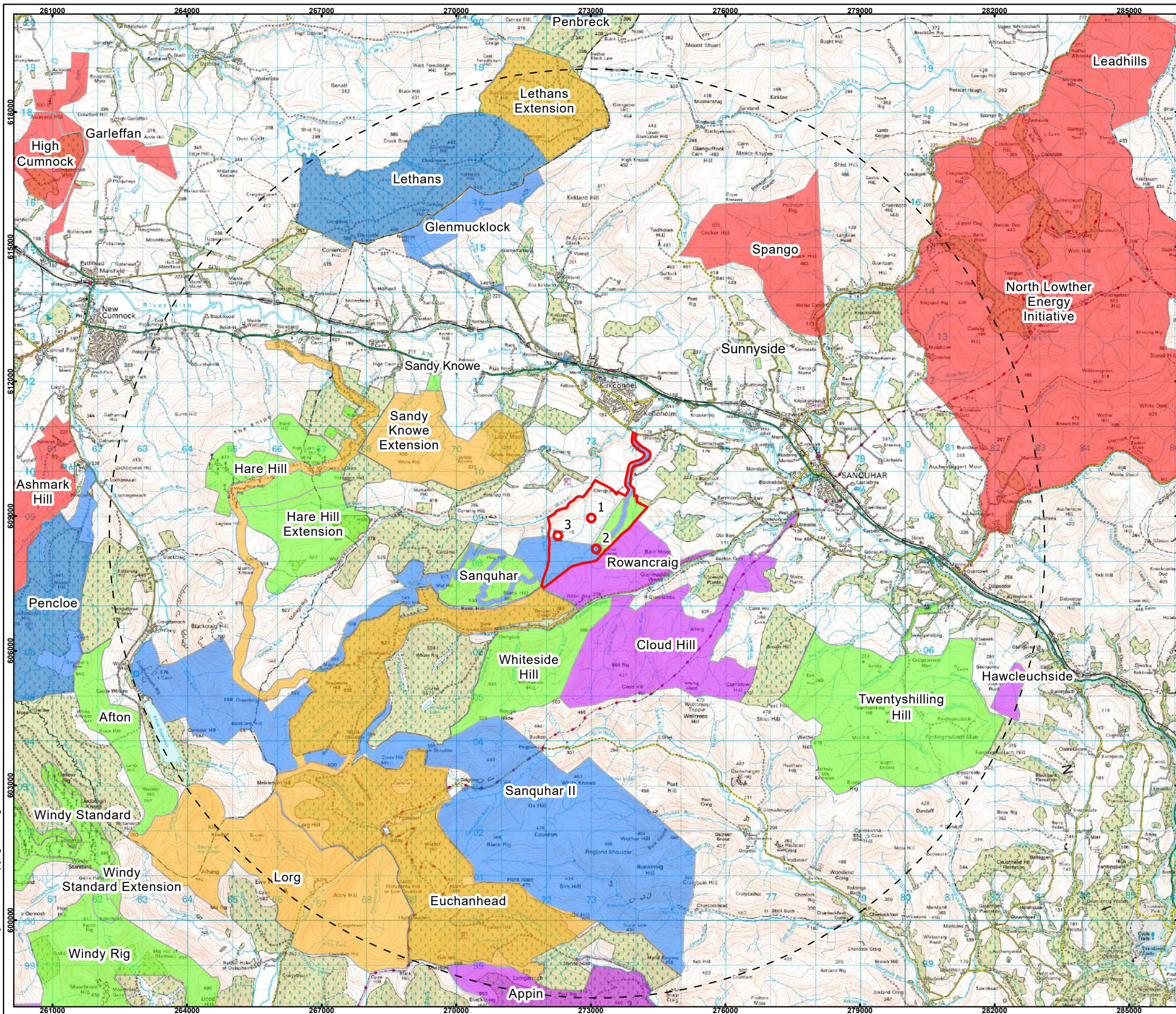
Drumbuie Renewables Ltd  
 Drumbuie  
 Sanquhar  
 DG4 6JX  
 United Kingdom  
 e: info@drumbuie.com



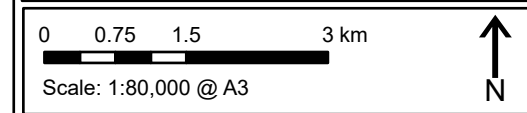


Legend

- Site Boundary
- Wind Turbine (149m to Tip)
- 10km Study Area
- Third Party Sites**
- Scoping
- Application
- Approved
- Installed
- Refused



Notes: N/A  
 Revisions: N/A  
 Layout: 397-220905-9005-C



**Plan 7- Cumulative Wind Farms**

Date: 18/08/2022      Ref: 397-220818-7016  
 Produced: GW      Reviewed: RE      Approved: GC







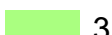


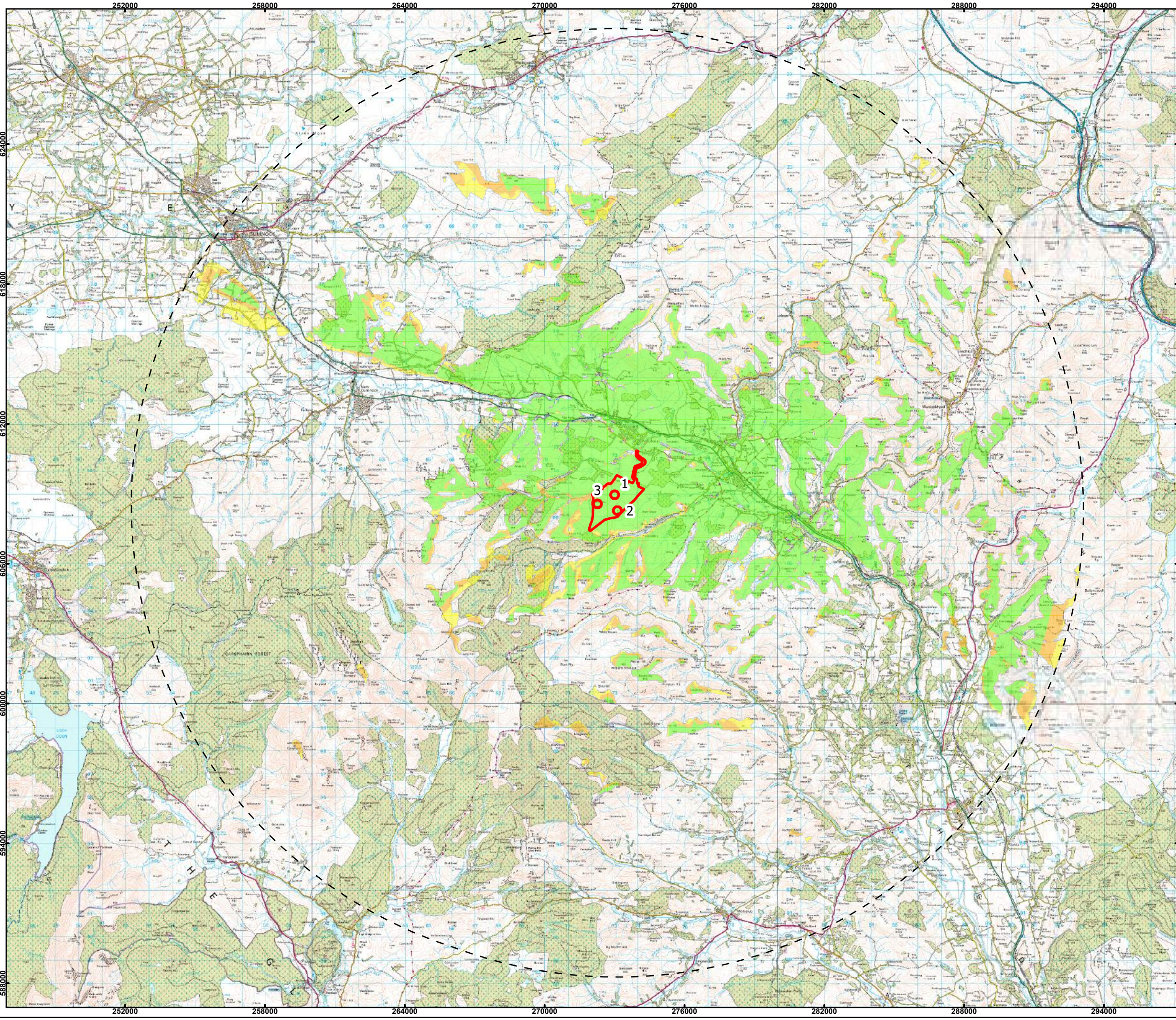
Drumbuie Renewables Ltd  
 Drumbuie  
 Sanquhar  
 DG4 6JX  
 United Kingdom  
 e: info@drumbuie.com



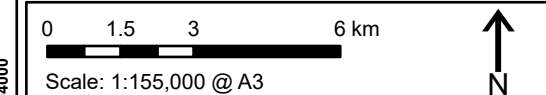
# 397 Herds Hill

## Legend

-  Site Boundary
-  Wind Turbine (149m to Tip)
-  20km Study Area
- No. Blade Tips (149m) Theoretically Visible
  -  0
  -  1
  -  2
  -  3



Notes: N/A  
Revisions: N/A  
Layout: 397-220905-9005-C



## Plan 8- Blade Tip ZTV (149m)

Date: 06/11/2023      Ref: 397-221213-7030-B  
Produced: GW      Reviewed: DW      Approved: GC



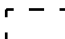



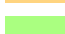


Drumbuie Renewables Ltd  
Drumbuie  
Sanquhar  
DG4 6JX  
United Kingdom  
e: info@drumbuie.com

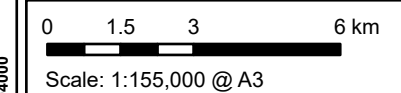


# 397 Herds Hill

## Legend

-  Site Boundary
-  Wind Turbine (149m to Tip)
-  20km Study Area
- No. Hubs (93m) Theoretically Visible
  -  0
  -  1
  -  2
  -  3

Notes: N/A  
Revisions: N/A  
Layout: 397-220905-9005-C



## Plan 9- Hub Height ZTV (93m)

Date: 06/11/2023      Ref: 397-221214-7032-B  
Produced: GW      Reviewed: DW      Approved: GC



Drumbuie Renewables Ltd  
Drumbuie  
Sanquhar  
DG4 6JX  
United Kingdom  
e: info@drumbuie.com

